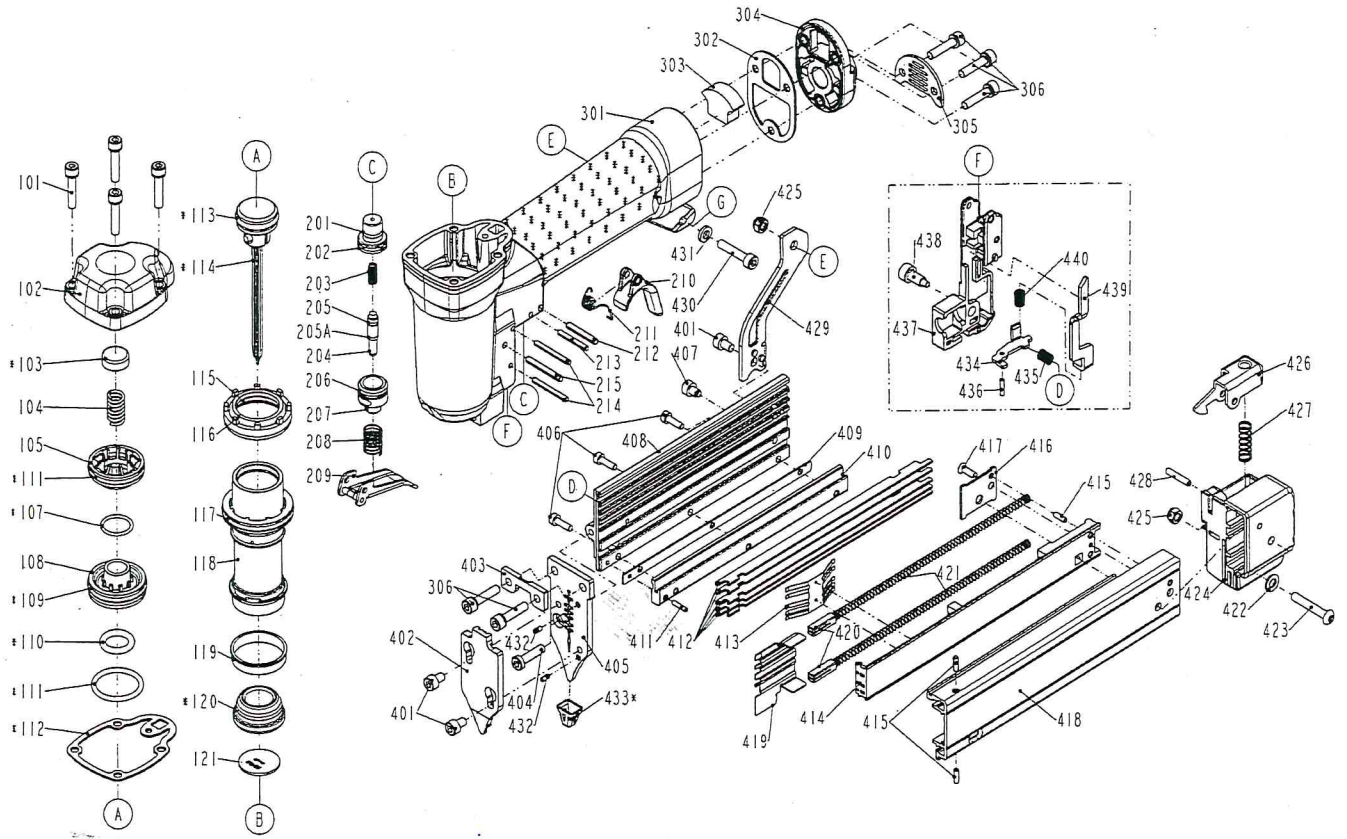


DIAGRAM OF B23/35-A2



ITEM NO.	PART NO.	DESCRIPTION	ITEM NO.	PART NO.	DESCRIPTION	ITEM NO.	PART NO.	DESCRIPTION
101	2040100-02100-0	BOLT ASSY	213	2040400-04100-0	SPRING PIN	425	2040500-02010-0	LOCK NUT
102	11369-096A401-1	CAP	214	2040400-04370-0	SPRING PIN	426	11343-0964701-1	LATCH
103	11370-0010003-1	SEAL	215	2040400-05370-0	SPRING PIN	427	11337-0084701-1	COMPRESSION SPRING 5
104	11360-0960001-1	COMPRESSION SPRING	301	11230-0966602-2	GUN BODY UNIT	428	2040400-05080-0	SPRING PIN
105	11399-0960001-2	COLLAR	302	1132H-0964701-1	GASKET	429	11323-0964705-1	POSITIONING SHEET
107	2041102-02050-0	O - RING	303	1132T-0960002-1	MUFFLER	430	2040101-02100-0	HEX.SOC.HD.BOLT
108	11368-0960001-1	HD.VALVE PISTON	304	11346-096A402-1	END CAP	431	2040202-02010-0	FLAT WASHER
109	2041104-03060-0	O - RING	305	11394-0964701-1	GUIDE PLATE	432	11329-0964702-1	PIN
110	2041106-02050-0	O - RING	306	2040100-02070-0	BOLT ASSY	433	11339-0968202-1	PROTECTIVE CASING
111	2041100-03051-0	O - RING	401	2040101-02020-0	HEX.SOC.HD.BOLT	434	1131J-1064701-1	POSITIONING SHEET
112	1132M-0964701-1	PACKING	402	11352-0964704-2	DRIVER GUIDE COVER A	435	1131L-1064701-1	POSITIONING SPRING
113	2041106-02010-0	O - RING	403	11353-0964701-1	DRIVER GUIDE COVER B	436	11329-0314701-1	PIN-A
114	11204-0960010-1	DRIVER UNIT	404	2040101-02080-2	HEX.SOC.HD.BOLT	437	1130T-0964701-1	STOPPER
115	2041105-03060-0	O - RING	405	11303-0964707-1	DRIVER GUIDE	438	1131N-0964701-1	SCREW
116	1131E-0960001-1	CYLINDER PRESS RING	406	2040101-01050-2	HEX.SOC.HD.BOLT	439	11305-0964704-1	STOPPER
117	2041109-04070-0	O - RING	407	1131R-0964701-1	SCREW	440	1133C-0664701-1	STOPPER FINGER SPRING
118	11320-0962401-1	CYLINDER	408	11389-0964707-1	MAGAZINE			
119	11322-0034701-1	CYLINDER RING	409	11377-0960003-1	FLAT BAR			
120	11327-0734701-2	BUMPER	410	11389-0964708-1	MAGAZINE GUIDE			
121	11388-1104701-1	DRIVER GUIDE	411	2040400-03050-0	SPRING PIN			
201	2041102-01020-0	O - RING	412	1133X-0960002-1	SPACER			
202	11373-0150001-3	TRIGGER VALVE HEAD	413	1134K-0960003-2	SPRING			
203	1133U-0014701-1	SPRING	414	11391-0964705-1	MAGAZINE COVER(B)			
204	11375-0154701-1	PLUNGER	415	2040400-04040-0	SPRING PIN			
205	2041102-01030-0	O - RING	416	1138K-0964702-1	SPACER SAFETY COVER			
205A	2041102-01031-0	O - RING	417	2040107-01031-0	TAP BOLT			
206	2041102-02020-0	O - RING	418	11391-0964706-1	MAGAZINE COVER(A)			
207	11374-0154701-1	PLUNGER CAP	419	11363-0964706-1	PUSHER			
208	11376-0154701-1	SPRING	420	11378-0961101-1	SHAFT			
209	11316-0964704-1	TRIGGER	421	11367-0224701-1	PUSHER SPRING			
210	1136S-0964703-1	SAFETY STOPPER	422	2040201-02010-1	FLAT WASHER			
211	11315-1064701-1	SPRING	423	2040102-02160-0	HALF ROUND HD.HEX.BOLT			
212	2040400-05100-0	SPRING PIN	424	11390-0964703-1	PROTECTING HOOD COVER			