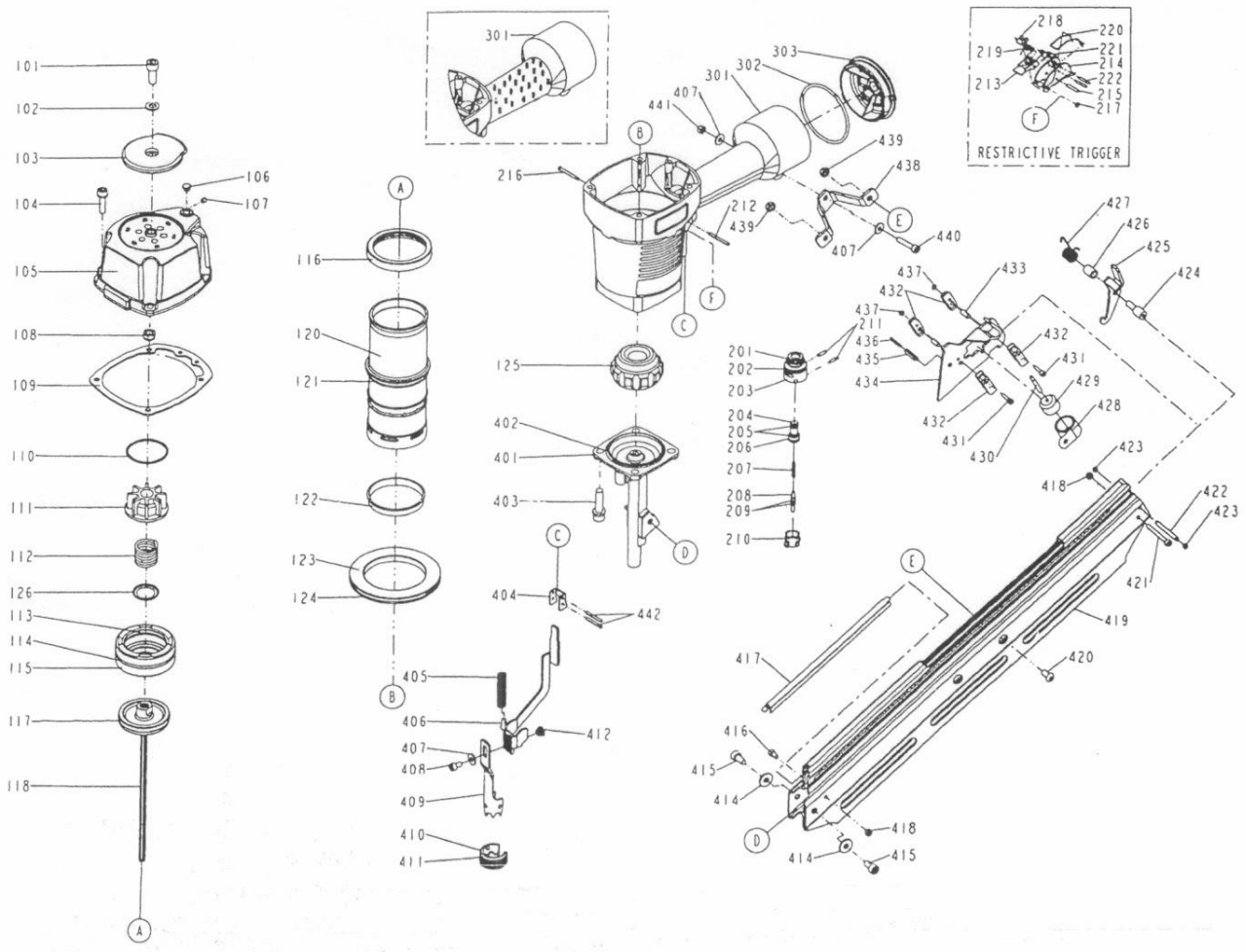


DIAGRAM OF A34/100-A2



ITEM NO.	PART NO.	DESCRIPTION	ITEM NO.	PART NO.	DESCRIPTION	ITEM NO.	PART NO.	DESCRIPTION
101	2040101-05020-0	HEX.SOC.HD.BOLT	209	2041102-01030-0	O - RING	418	2040500-02010-0	LOCK NUT
102	2040202-06010-0	FLAT WASHER	210	11373-0084701-1	TRIGGER VALVE HEAD	419	11389-0874701-1	MAGAZINE A
103	11371-0370001-1	DEFLECTOR	211	2040400-05060-0	SPRING PIN	420	2040102-04010-0	HALF ROUND HD.HEX.BOLT
104	2040100-04020-0	BOLT ASSY	212	2040400-05160-0	SPRING PIN	421	2040101-02141-0	HEX.SOC.HD.BOLT
105	11369-0374302-2	CAP	213	11317-0254703-2	SECONDARY TRIGGER	422	1132E-0374701-1	LATCH PIN
106	1135S-0350001-1	GROMMET	214	11316-0250004-3	TRIGGER	423	1135H-0250001-1	SHAFT RING
107	2040104-03010-0	HEX.SOC.HD.SCREW	215	11325-0254701-2	PIN	424	1133V-0354702-1	MAGAZINE SPACER
108	2040500-05010-0	LOCK NUT	216	11318-0464701-1	TRIGGER PIVOT PIN	425	11343-0354701-1	LATCH
109	11302-0370001-2	CYLINDER CAP SEAL	217	1131D-0460001-1	URETHANE RETAINER	426	11398-0350001-1	LATCH SPRING BUSHING
110	11380-0374701-1	GASKET	218	1133L-0250002-2	STOPPER	427	1132F-0354701-1	LATCH SPRING
111	11370-0370001-2	SEAL	219	11315-0250002-1	SPRING	428	11372-0350001-1	SPRING
112	11360-0354701-3	COMPRESSION SPRING	220	11376-0250001-1	SPRING	429	11386-0370001-1	ROLLING ELEMENT
113	2041108-05040-0	O - RING	221	11319-0250002-2	SPRING	430	11385-0604701-1	ROLL PIN
114	2041108-07010-0	O - RING	222	2040401-03080-0	SPIRAL PINS	431	2040101-01020-0	HEX.SOC.HD.BOLT
115	11368-0370004-1	HD.VALVE PISTON	301	11230-0374204-2	GUN BODY UNIT	432	1133W-0370001-3	PUSHER BEARING
116	11399-0370004-1	COLLAR	302	2041106-07010-0	O - RING	433	11329-0354701-1	PIN
117	2041108-06030-0	O - RING	303	11346-0371304-1	END CAP	434	11363-0644706-1	PUSHER
118	11204-0870001-1	DRIVER UNIT	401	11382-0874701-3	NOSE PIECE	435	2040400-08100-0	SPRING PIN
120	11320-0370007-1	CYLINDER	402	2041104-07010-0	O - RING	436	2040400-05100-0	SPRING PIN
121	2041101-06010-0	O - RING	403	2040100-05010-2	BOLT ASSY	437	2040500-01010-0	LOCK NUT
122	11322-0370002-1	CYLINDER RING	404	11338-0354702-1	SAFETY GUIDE	438	11323-0874702-1	POSITIONING SHEET
123	11321-0370001-1	CYLINDER SPACER	405	11337-0644701-2	SAFETY SPRING	439	2040500-04010-0	LOCK NUT
124	2041101-09010-0	O - RING	406	11332-0644701-1	SAFETY B	440	2040101-03161-0	HEX.SOC.HD.BOLT
125	11327-0370001-4	BUMPER	407	2040202-03010-0	FLAT WASHER	441	2040500-03020-0	LOCK NUT
126	11381-0864701-1	WASHER	408	2040101-03030-0	HEX.SOC.HD.BOLT	442	2040400-05130-0	SPRING PIN
201	2041104-02020-0	O - RING	409	11331-0874701-1	SAFETY A			
202	2041104-02030-0	O - RING	410	11339-0374701-1	PROTECTIVE CASING			
203	11374-0084701-1	PLUNGER CAP	411	1131G-0374701-1	FIXED RING			
204	1133S-0250002-1	VALVE PLUNGER	412	1135K-0644701-1	SCREW FIXING SEAT			
205	2041100-01070-0	O - RING	414	2040202-04010-0	FLAT WASHER			
206	2041100-01030-0	O - RING	415	2040101-04020-0	HEX.SOC.HD.BOLT			
207	11376-0254701-1	SPRING	416	2040101-02030-0	HEX.SOC.HD.BOLT			
208	11375-0084701-1	PLUNGER	417	11396-0644709-1	STEEL CHANNEL			