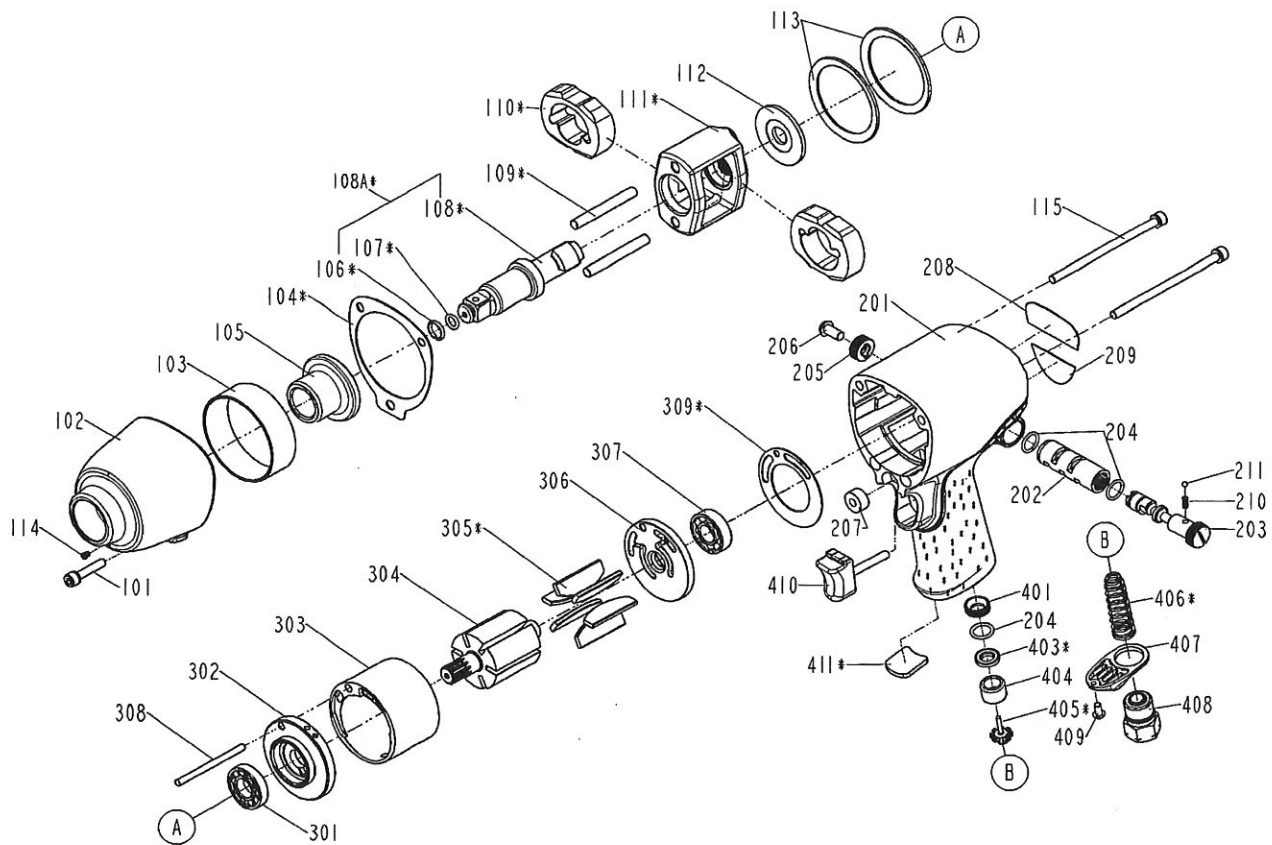


DIAGRAM OF IT241-A1



ITEM NO.	PART NO.	DESCRIPTION	ITEM NO.	PART NO.	DESCRIPTION	ITEM NO.	PART NO.	DESCRIPTION
101	2040100-03040-0	BOLT ASSY	307	2041200-00085-0	BEARING			
102	12318-0070010-1	HAMMER CASE	308	1230B-0074701-1	PIN			
103	1230F-0100001-1	HAMMER CASE PILOT	309	1230S-0070005-1	REAR END PLATE GASKET			
104	1230S-0070006-1	HAMMER CASE GASKET	401	1230K-0070001-1	INSERT BUSHING			
105	1230K-0070002-1	HAMMER CASE BUSHING	403	12319-0070001-3	SEAL			
106	2040306-00010-0	SOCKET RETAINER	404	1230K-0070007-3	BUSHING			
107	2041100-01070-0	O - RING	405	12226-0074701-1	TIP VALVE			
108	1230D-0070012-2	ANVIL	406	12308-0070004-2	SPRING			
108A	12227-0070026-2	ANVIL UNIT	407	12346-0074703-1	EXHAUST DEFLECTOR			
109	1230B-0070001-1	HAMMER FRAME PIN	408	12309-0074715-1	AIR INLET			
110	1230C-0070002-1	HAMMER	409	2040102-01010-0	HALF ROUND HD.HEX.BOLT			
111	1230E-0070002-1	HAMMER FRAME	410	12225-0074702-1	TRIGGER UNIT			
112	12340-0070001-1	WASHER	411	12351-0070001-1	MUFFLER			
113	12323-0074701-1	BEARING SHIELD						
114	2042400-00040-0	HAMMER CASE GREASE FITTING						
115	2040100-03161-0	BOLT ASSY						
201	12201-0070027-1	HOUSING						
202	1230K-0070010-1	REVERSE VALVE BUSHING						
203	1230L-0074702-1	REVERSE VALVE A						
204	2041104-02070-0	O - RING						
205	1230L-0074701-1	REVERSE VALVE B						
206	2040102-04010-2	HALF ROUND HD.HEX.BOLT						
207	1231U-0070001-1	TRIGGER RETAINER						
208	1230R-0070005-1	MARK PLATE A						
209	1230R-0070006-1	MARK PLATE B						
210	1230J-0074701-1	SPRING						
211	2040800-01030-0	BALL						
301	2041200-00121-0	BEARING						
302	12312-0070003-1	FRONT BEARING PLATE						
303	12315-0070004-1	CYLINDER						
304	12313-0070007-2	ROTOR						
305	12314-0073901-1	BLADES						
306	12316-0050001-1	REAR BEARING PLATE						