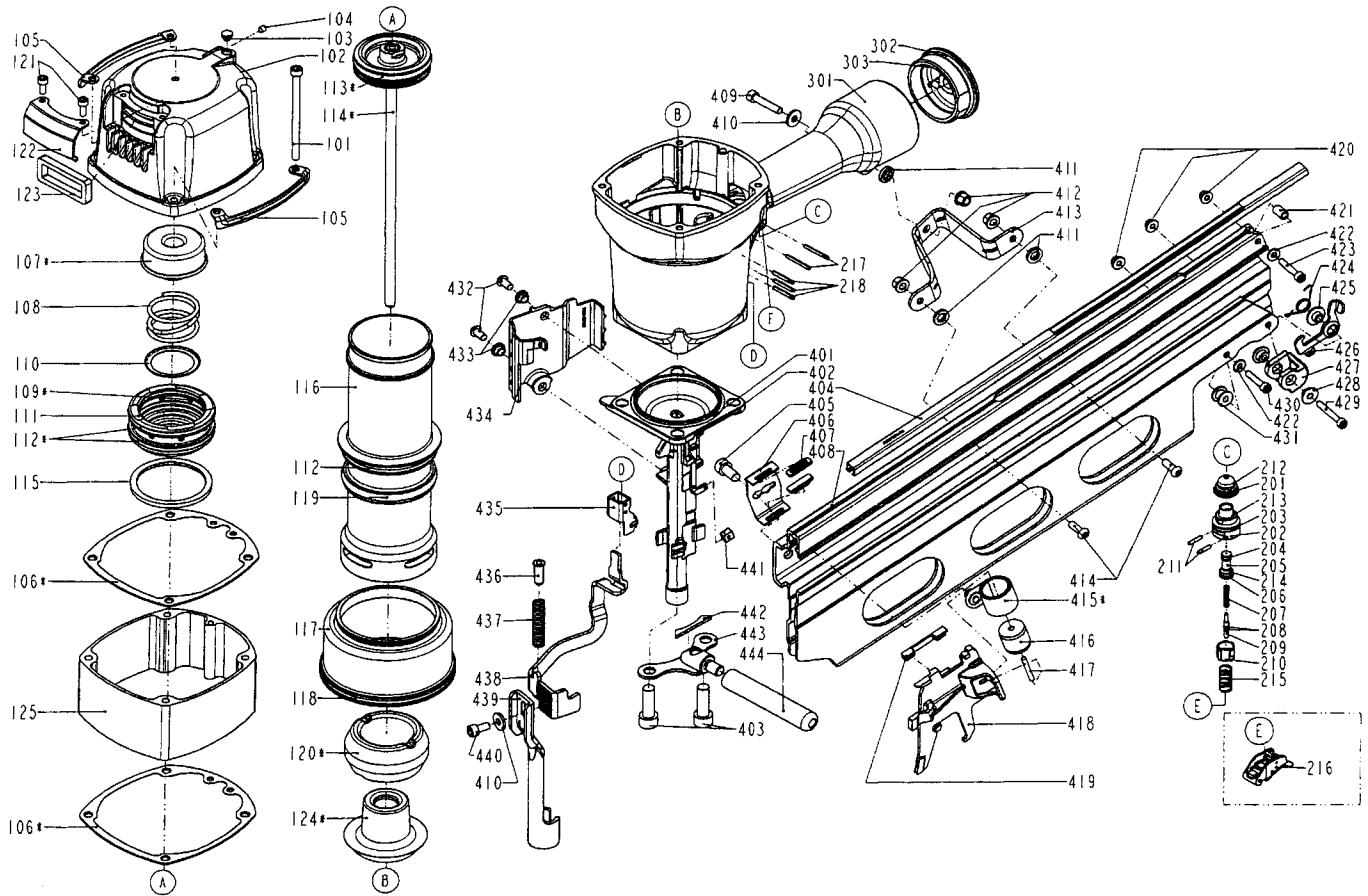


DIAGRAM OF A22/160-A1



ITEM NO.	PART NO.	DESCRIPTION	ITEM NO.	PART NO.	DESCRIPTION	ITEM NO.	PART NO.	DESCRIPTION
101	2040101-04241-2	HEX.SOC.HD.BOLT	209	11375-0860002-1	PLUNGER	421	11398-1454701-1	LATCH SPRING BUSHING
102	11369-1034301-1	CAP	210	11373-0860001-1	TRIGGER VALVE HEAD	422	2040201-03040-0	FLAT WASHER
103	1135S-0350001-1	GROMMET	211	11329-0860001-1	PIN	423	2040101-03210-0	HEX.SOC.HD.BOLT
104	2040104-03010-0	HEX.SOC.HD.SCREW	212	1137A-0860001-1	COVER-PLUNGER	424	1132F-0374701-1	LATCH SPRING
105	11397-1034701-1	GUIDE COVER	213	2041104-02070-0	O - RING	425	11381-0374701-1	WASHER
106	11302-1034701-1	CYLINDER CAP SEAL	214	2041100-01050-0	O - RING	426	11343-1454701-1	LATCH
107	11370-1030001-1	SEAL	215	11376-0370001-1	SPRING	427	1134W-1374701-1	FEED BUMPER
108	11360-1030001-2	COMPRESSION SPRING	216	11224-1111101-1	TRIGGER UNIT	428	1138F-1374701-1	FEED BUMPER SPACER RING
109	2041108-06050-0	O - RING	217	2040401-05150-0	SPIRAL PINS	429	2040101-03200-0	HEX.SOC.HD.BOLT
110	11381-1030001-1	WASHER	218	2040401-05120-0	SPIRAL PINS	430	2040101-03110-0	HEX.SOC.HD.BOLT
111	11368-1030001-1	HD.VALVE PISTON	301	11230-1456601-1	GUN BODY	431	1133V-1374701-1	MAGAZINE SPACER
112	2041108-07050-0	O - RING	302	2041101-05020-0	O - RING	432	2040102-04010-2	HALF ROUND HD.HEX.BOLT
113	2041100-06011-0	O - RING	303	11346-0864303-1	END CAP	433	1136L-1374701-1	PROTECTIVE INSERT
114	11204-1450001-1	DRIVER UNIT	401	2041104-08020-0	O - RING	434	1134R-1374701-1	SPRING COVER
115	11399-1030001-1	COLLAR	402	11382-1454701-2	NOSE PIECE	435	11338-0864701-2	SAFETY GUIDE
116	11320-1450001-1	CYLINDER	403	2040101-06010-2	HEX.SOC.HD.BOLT	436	11395-1374701-1	SAFETY ROD
117	11321-1450001-1	CYLINDER SPACER	404	11396-1454701-1	STEEL CHANNEL	437	11337-1374701-1	SAFETY SPRING
118	2041104-11010-0	O - RING	405	2040101-05010-2	HEX.SOC.HD.BOLT	438	11332-1374701-1	SAFETY B
119	2041108-07060-0	O - RING	406	1135B-1454701-1	GUIDE	439	11331-1454701-1	SAFETY A
120	11327-1034702-1	BUMPER-A	407	1135G-1454701-1	RUBBER PAD	440	2040101-04020-0	HEX.SOC.HD.BOLT
121	2040101-03050-9	HEX.SOC.HD.BOLT	408	11389-1454701-1	MAGAZINE A	441	1134W-0374701-1	FEED BUMPER
122	11371-1034701-1	DEFLECTOR	409	2040101-04111-0	HEX.SOC.HD.BOLT	442	1135G-1114701-1	RUBBER PAD
123	1132T-1030001-1	MUFFLER	410	2040202-04010-0	FLAT WASHER	443	1120K-1034701-1	SECOND HANDLE BASE UNIT
124	11327-1034703-1	BUMPER-B	411	12319-0070001-3	SEAL	444	11215-1374701-2	HANDLE
125	1130E-1454301-1	CAP	412	2040501-04010-0	BOLT CAP			
201	2041104-02060-0	O - RING	413	11323-1454701-1	POSITIONING SHEET			
202	11374-0860001-1	PLUNGER CAP	414	2040102-04060-0	HALF ROUND HD.HEX.BOLT			
203	2041100-02050-0	O - RING	415	11278-1450001-1	SPRING UNIT			
204	2041100-01070-0	O - RING	416	11386-1450001-1	ROLLING ELEMENT			
205	1133S-0860001-1	VALVE PLUNGER	417	2040403-07150-0	PIN			
206	2041100-01030-0	O - RING	418	11363-1454701-1	PUSHER			
207	11376-0860001-1	SPRING	419	1133W-1454701-1	PUSHER BEARING			
208	2041108-01020-0	O - RING	420	2040501-03040-0	BOLT CAP			