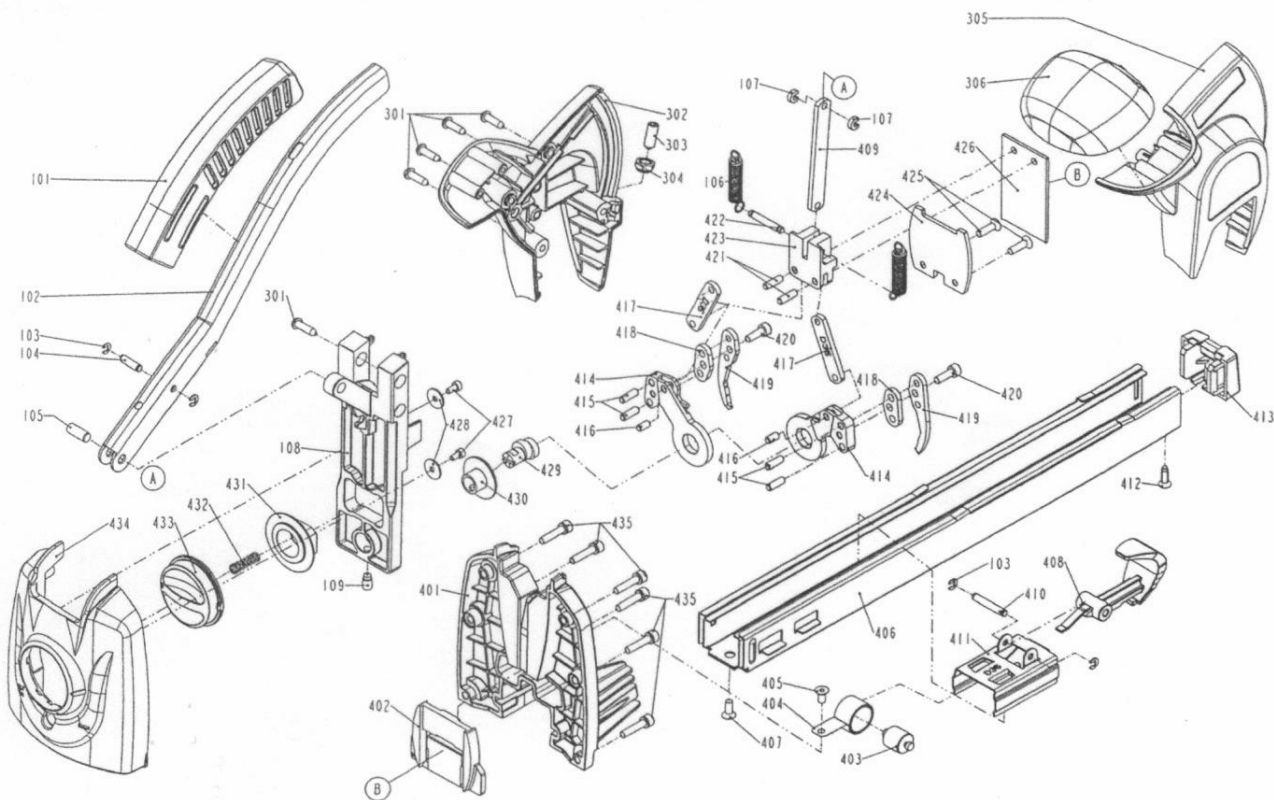


DIAGRAM OF D35/18M-A1



ITEM NO.	PART NO.	DESCRIPTION	ITEM NO.	PART NO.	DESCRIPTION	ITEM NO.	PART NO.	DESCRIPTION
101	1133P-1444701-1	HANDLE GRIP	419	113CE-1424701-1	ANVIL HOOL			
102	11233-1444701-1	HANDLE UNIT A	420	2040101-02060-2	HEX.SOC.HD.BOLT			
103	2040302-23010-0	E - RING	421	2040403-07360-0	PIN			
104	11324-1444701-1	FIXED PIN	422	11324-1444702-1	FIXED PIN			
105	2040403-09080-0	PIN	423	1137F-1444701-1	LINK-BLOCK			
106	11328-1440001-1	PULL SPRING	424	11351-1424701-1	DRIVER GUIDE COVER			
107	1131G-1421101-1	FIXED RING	425	2040103-02030-2	COUNTER SUNK SCREW			
108	11326-1440001-1	BASE	426	11387-1420001-1	DRIVER			
109	2040104-03040-2	HEX.SOC.HD.SCREW	427	2040101-01040-2	HEX.SOC.HD.BOLT			
301	2040107-02170-0	TAP BOLT	428	2040201-01040-0	FLAT WASHER			
302	1137A-1444702-1	COVER-SAFETY B	429	113CG-1424701-1	PENETRATION ECCENTRIC			
303	2040104-04020-0	HEX.SOC.HD.SCREW	430	113CF-1424701-1	BUSHING			
304	2040501-04010-0	BOLT CAP	431	1133W-1424701-1	PUSHER BEARING			
305	1137A-1444701-1	COVER-SAFETY A	432	1134X-1424701-1	SPRING			
306	1137K-1444701-1	HANDLE B	433	113CC-1420701-1	PENETRATION CONTROL KNOB			
401	113CH-142H302-1	REAR COVER	434	1132C-142H302-1	MAGAZINE			
402	11303-1424701-1	DRIVER GUIDE	435	2040100-02070-0	BOLT ASSY			
403	11386-1424701-1	ROLLING ELEMENT						
404	11372-1420001-1	SPRING						
405	2040103-02050-0	COUNTER SUNK SCREW						
406	11273-1424701-1	MAGAZINE UNIT						
407	2040103-02060-2	COUNTER SUNK SCREW						
408	1133E-1424701-1	PIN EJE.EXT.HANDLE						
409	113CB-1444701-1	LINK A						
410	1133G-1424701-1	PUSHER PIN						
411	11363-1424701-1	PUSHER						
412	2040107-02111-0	TAP BOLT						
413	11390-1424701-1	PROTECTING HOOD COVER						
414	113CD-1420001-1	ANVIL HOLDER						
415	2040403-07060-0	PIN						
416	2040403-06040-0	PIN						
417	113CB-1424701-1	LINK						
418	11380-1424701-1	GASKET						