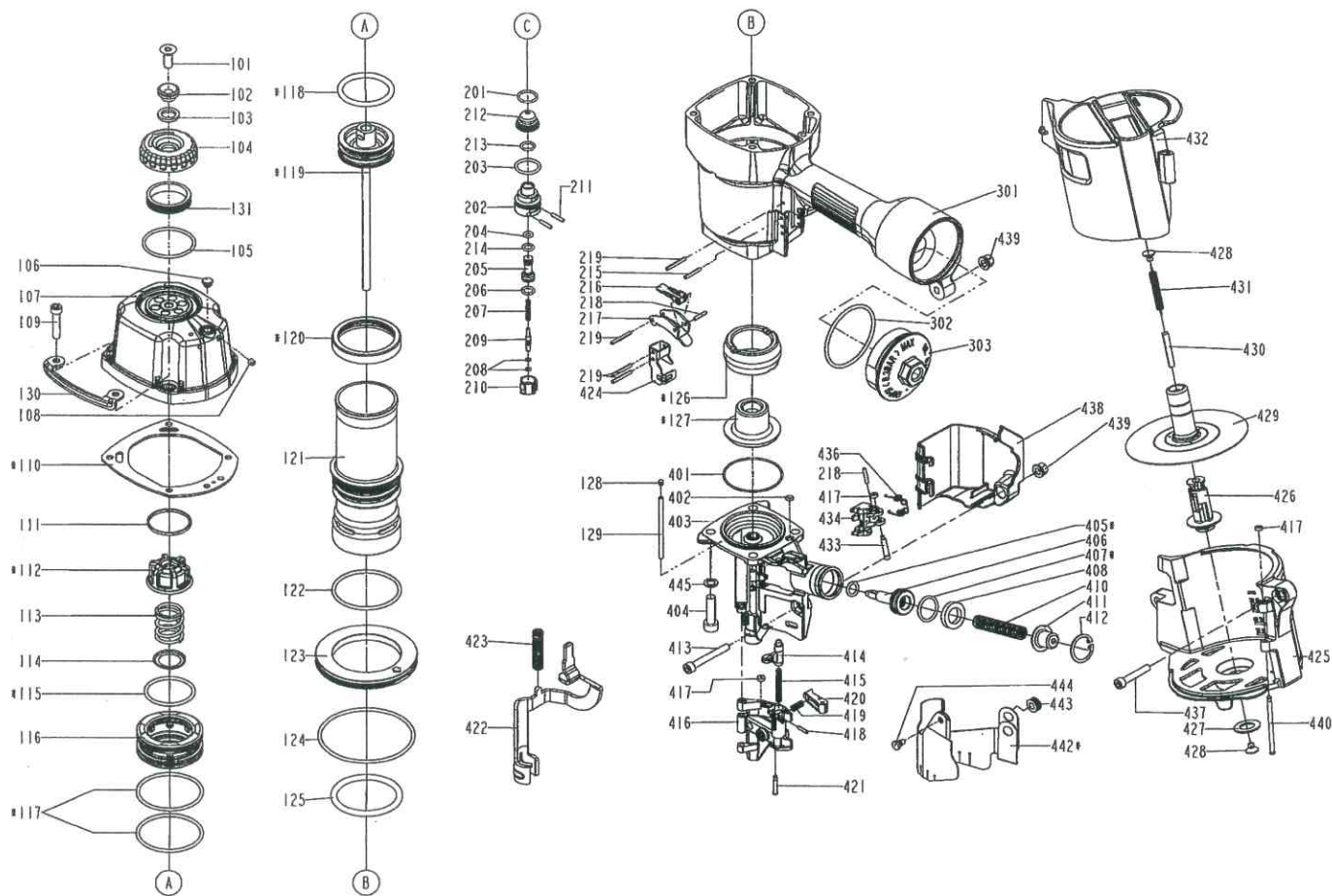


DIAGRAM OF C33/83-A2



ITEM NO.	PART NO.	DESCRIPTION	ITEM NO.	PART NO.	DESCRIPTION	ITEM NO.	PART NO.	DESCRIPTION
101	2040103-05010-9	COUNTER SUNK SCREW	203	2041100-02050-0	O - RING	415	11311-0860001-1	LATCH SPRING
102	11381-0954702-1	WASHER	204	2041100-01070-0	O - RING	416	11361-0974702-1	DOOR
103	1135G-0460001-1	RUBBER PAD	205	1133S-0860001-1	VALVE PLUNGER	417	1135H-0860001-1	PU RETAINER
104	11371-0954701-1	DEFLECTOR	206	2041100-01030-0	O - RING	418	2040400-05060-0	SPRING PIN
105	2041102-05050-0	O - RING	207	11376-0860001-1	SPRING	419	1133C-0860001-1	STOPPER FINGER SPRING
106	1135S-0350001-1	GROMMET	208	2041108-01020-0	O - RING	420	11358-0864701-1	NAIL STOP
107	11369-0971301-2	CAP	209	11375-0860002-1	PLUNGER	421	11359-0864701-1	PIN-NAIL STOP
108	2040104-03010-0	HEX.SOC.HD.SCREW	210	11373-0860001-1	TRIGGER VALVE HEAD	422	11330-0974703-1	SAFETY
109	2040101-04110-2	HEX.SOC.HD.BOLT	211	11329-0860001-1	PIN	423	11337-0864701-1	SAFETY SPRING
110	11302-0864701-1	CYLINDER CAP SEAL	212	1137A-0860001-1	COVER-PLUNGER	424	11338-0864701-2	SAFETY GUIDE
111	11381-0970001-1	WASHER SEAL	213	2041104-02070-0	O - RING	425	11354-0974702-1	MAGAZINE CASE
112	11370-0970001-1	SEAL	214	2041100-01050-0	O - RING	426	11357-0954701-1	MAGAZINE POST
113	11360-0354701-3	COMPRESSION SPRING	215	2040401-05100-0	SPIRAL PINS	427	1138Y-0954701-2	RUBBER RING
114	11381-0864701-1	WASHER	216	11317-0864701-2	SECONDARY TRIGGER	428	1134M-0864701-1	SPRING BASE
115	2041108-05070-0	O - RING	217	11316-0864701-3	TRIGGER	429	11356-0970001-1	NAIL HOLDER
116	11368-0860001-3	HD.VALVE PISTON	218	2040401-05080-0	SPIRAL PINS	430	1138W-0860001-1	SPACER
117	2041108-06050-0	O - RING	219	2040401-05120-0	SPIRAL PINS	431	11328-0860001-1	PULL SPRING
118	2041108-05060-0	O - RING	301	11230-0864201-1	GUN BODY UNIT	432	11355-0974703-1	MAGAZINE COVER
119	11204-0970003-1	DRIVER UNIT	302	2041101-05020-0	O - RING	433	11365-0864701-1	PIN FEED PISTON
120	11399-0860001-1	COLLAR	303	11346-0861301-1	END CAP	434	11306-0974702-1	FEED FINGER
121	11320-0970001-1	CYLINDER	401	2041108-06060-0	O - RING	436	11307-0864701-1	FEED FINGER SPRING
122	2041108-06010-0	O - RING	402	2041108-01010-0	O - RING	437	2040101-04121-0	HEX.SOC.HD.BOLT
123	11321-0860001-1	CYLINDER SPACER	403	11382-0974702-1	NOSE PIECE	438	1134R-0974701-1	SPRING COVER
124	2041101-09020-0	O - RING	404	2040101-05040-1	HEX.SOC.HD.BOLT	439	2040501-04010-0	BOLT CAP
125	2041100-06010-0	O - RING	405	2041100-01090-0	O - RING	440	1136R-0864701-1	MAGAZINE SHAFT PIN
126	11327-0864701-1	BUMPER-A	406	11364-0974703-1	FEED PISTON	442	11383-0970001-1	MUZZLE PROTECTOR
127	11327-0864702-1	BUMPER-B	407	2041100-03051-0	O - RING	443	1135U-1010001-1	PROTECTOR WASHER
128	1135S-0860001-1	GROMMET A	408	1134W-0860001-1	FEED BUMPER	444	1134B-0864701-1	DUST SHIELD PLUG
129	11362-0864701-1	DOOR SHAFT PIN	410	11367-0860001-1	PUSHER SPRING	445	2040200-06011-0	SPRING WASHER
130	11397-0864701-1	GUIDE COVER	411	11366-0864701-1	FEED PISTON CAP			
131	1132T-0780001-1	MUFFLER	412	2040300-02010-0	C - RING			
201	2041104-02060-0	O - RING	413	2040101-04251-0	HEX.SOC.HD.BOLT			
202	11374-0860001-1	PLUNGER CAP	414	11310-0954701-1	DOOR LATCH			