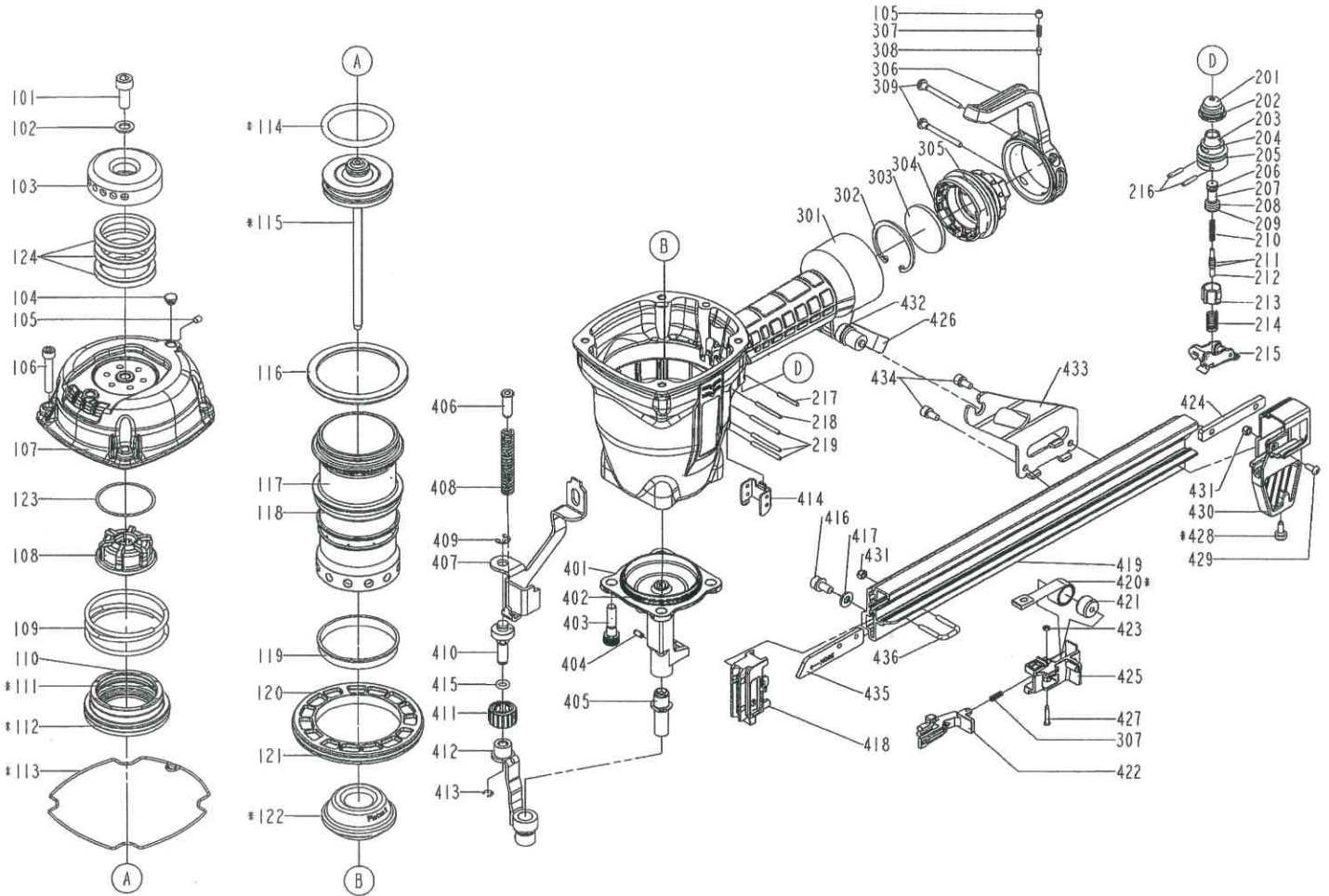


DIAGRAM OF T30/38



ITEM NO.	PART NO.	DESCRIPTION	ITEM NO.	PART NO.	DESCRIPTION	ITEM NO.	PART NO.	DESCRIPTION
101	2040101-05020-2	HEX.SOC.HD.BOLT	210	11376-0254701-1	SPRING	415	2041109-01280-0	O - RING
102	2040201-06040-0	FLAT WASHER	211	2041108-01020-0	O - RING	416	113EG-1274701-1	BOLT ASSY
103	113BG-1274701-1	EXHAUST DEFLECTOR GASKET	212	11375-1080001-2	PLUNGER	417	2040201-04070-0	FLAT WASHER
104	1135S-0350001-1	GROMMET	213	11373-0864701-1	TRIGGER VALVE HEAD	418	1136H-1274703-1	FIXED SUPPORT A
105	2040104-03010-0	HEX.SOC.HD.SCREW	214	11376-0154701-1	SPRING	419	11389-1274714-1	MAGAZINE A
106	2040101-04121-0	HEX.SOC.HD.BOLT	215	11224-0461101-1	TRIGGER UNIT	420	11372-1094701-1	SPRING
107	11369-1311302-1	CAP	216	11329-0860001-1	PIN	421	11386-1260001-2	ROLLING ELEMENT
108	11370-0370005-1	SEAL	217	2040401-05110-0	SPIRAL PINS	422	11363-1274706-1	PUSHER
109	11360-0370003-1	COMPRESSION SPRING	218	2040401-05150-0	SPIRAL PINS	423	1131D-0460001-1	URETHANE RETAINER
110	11202-0370006-3	HD.VALVE PISTON UNIT	219	2040401-05230-0	LINE-UP PIN	424	11380-1274701-1	GASKET
111	2041108-05040-0	O - RING	301	11230-1315201-2	GUN BODY UNIT	425	1136E-1274702-2	PROTECTING HOOD COVER
112	2041109-07030-0	O - RING	302	2040300-12010-0	C - RING	426	2042600-00010-0	QUICK RELEASE ASSY
113	11302-1314701-1	CYLINDER CAP SEAL	303	1137N-0370001-1	FILTER	427	11324-0684701-1	FIXED PIN
114	2041104-05091-0	O - RING	304	11346-1314301-1	END CAP	428	113DG-1274701-1	ROUND CROSS SCREW
115	11204-1270006-1	DRIVER UNIT	305	2041101-05010-0	O - RING	429	2040102-02040-0	HALF ROUND HD.HEX.BOLT
116	1131E-1310001-2	CYLINDER PRESS RING	306	11285-1314701-1	SPRING RETAINER UNIT	430	11390-1274701-4	PROTECTING HOOD COVER
117	11320-1310002-3	CYLINDER	307	11337-0370003-1	SAFETY SPRING	431	2040500-02010-0	LOCK NUT
118	2041101-06010-0	O - RING	308	1136C-1314701-1	POSITIONING AXIS	432	1131M-1274701-1	LOCATING WHEEL
119	11322-0370002-1	CYLINDER RING	309	1138L-0374702-1	SCREW	433	11323-1274709-1	POSITIONING SHEET
120	11321-1310002-1	CYLINDER SPACER	401	11382-1274708-1	NOSE PIECE	434	2040100-03110-2	BOLT ASSY
121	2041101-10010-0	O - RING	402	2041105-07010-0	O - RING	435	1133X-1274701-1	SPACER
122	11327-1314702-1	BUMPER	403	2040101-05061-5	HEX.SOC.HD.BOLT	436	1133N-1274701-2	PIN
123	11381-1310002-1	WASHER	404	2040401-07040-0	SPIRAL PINS			
124	1132T-1310001-1	MUFFLER	405	11398-1274704-1	LATCH SPRING BUSHING			
201	1137A-0860001-1	COVER-PLUNGER	406	11395-1374701-1	SAFETY ROD			
202	2041104-02060-0	O - RING	407	11332-1274702-1	SAFETY B			
203	11374-0860001-1	PLUNGER CAP	408	11337-1314703-1	SAFETY SPRING			
204	2041104-02070-0	O - RING	409	2040302-27020-0	E - RING			
205	2041100-02050-0	O - RING	410	11227-1314701-1	ADJUST ROD UNIT			
206	2041100-01070-0	O - RING	411	11393-1311101-1	ADJUST AXIE			
207	1133S-0860001-1	VALVE PLUNGER	412	11254-1274702-2	SAFETY A UNIT			
208	2041100-01050-0	O - RING	413	1131C-0644701-1	RING			
209	2041100-01030-0	O - RING	414	11338-0374703-1	SAFETY GUIDE			