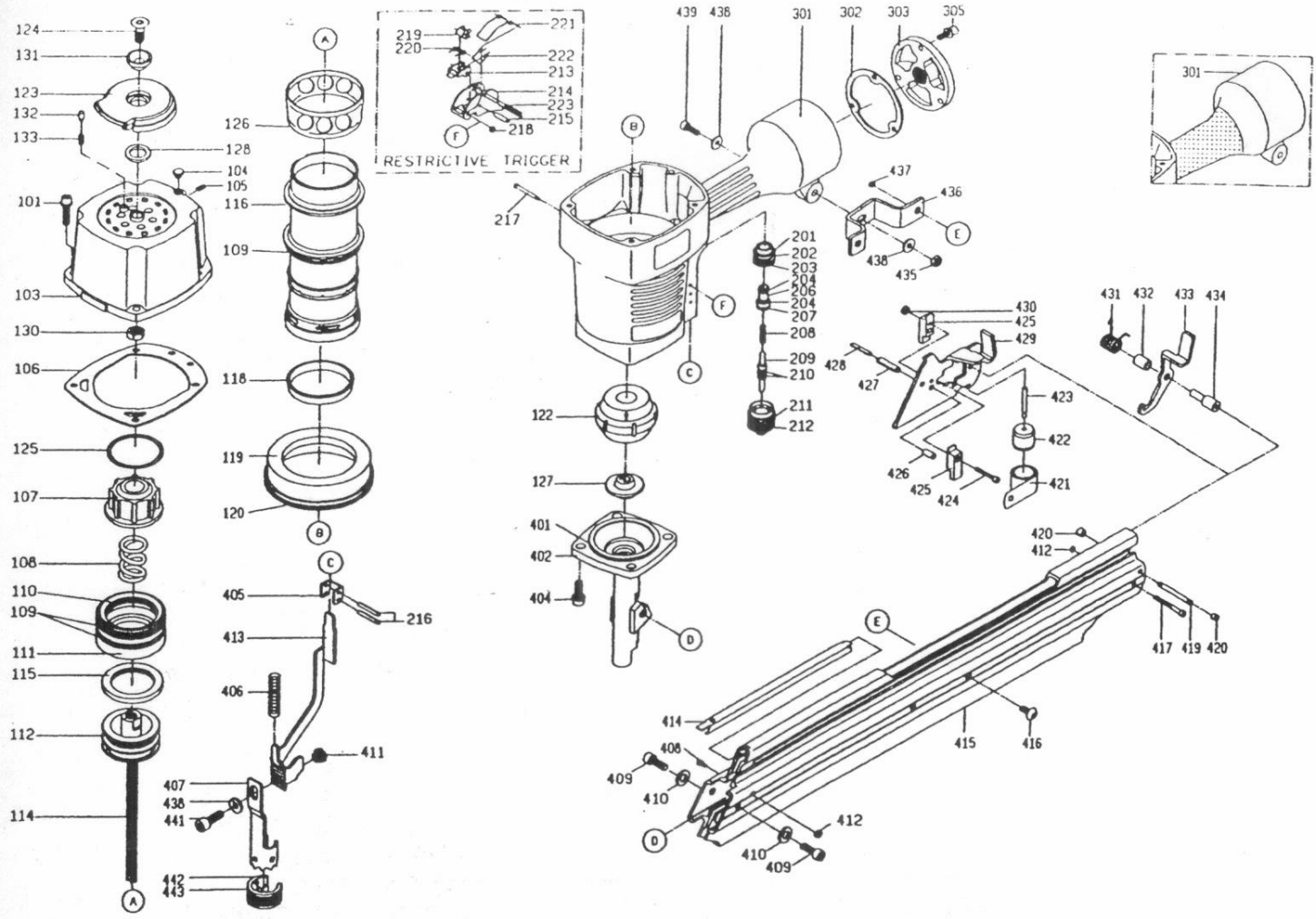


DIAGRAM OF N90PA-A1



ITEM NO.	PART NO.	DESCRIPTION	ITEM NO.	PART NO.	DESCRIPTION	ITEM NO.	PART NO.	DESCRIPTION
101	2040100-04020-0	BOLT ASSY	207	2041100-01030-0	O - RING	414	11396-0644701-1	STEEL CHANNEL
103	11369-0354301-2	CAP	208	11376-0254701-1	SPRING	415	11389-0644701-1	MAGAZINE A
104	11355-0350001-1	GROMMET	209	11375-0250001-1	PLUNGER	416	2040102-04010-0	HALF ROUND HD.HEX.BOLT
105	2040104-03010-0	HEX.SOC.HD.SCREW	210	2041102-01030-0	O - RING	417	2040101-02141-0	HEX.SOC.HD.BOLT
106	11302-0350001-2	CYLINDER CAP SEAL	211	11374-0254701-1	PLUNGER CAP	419	1132E-0374701-1	LATCH PIN
107	11370-0350002-2	SEAL	212	2041100-02050-0	O - RING	420	1135H-0250001-1	SHAFT RING
108	11360-0354701-3	COMPRESSION SPRING	213	11317-0254703-2	SECONDARY TRIGGER	421	11372-0350001-1	SPRING
109	2041108-06010-0	O - RING	214	11316-0250004-3	TRIGGER	422	11386-0370001-1	ROLLING ELEMENT
110	2041108-05010-0	O - RING	215	11325-0254701-2	PIN	423	11385-0604701-1	ROLL PIN
111	11368-0350003-3	HD.VALVE PISTON	216	2040400-05130-0	SPRING PIN	424	2040101-01020-0	HEX.SOC.HD.BOLT
112	2041108-05020-0	O - RING	217	11318-0464701-1	TRIGGER PIVOT PIN	425	1133W-0370001-3	PUSHER BEARING
114	11204-0640005-1	DRIVER UNIT	218	1131D-0460001-1	URETHANE RETAINER	426	11329-0354701-1	PIN
115	11399-0070001-1	COLLAR	219	1133L-0250002-2	STOPPER	427	2040400-08100-0	SPRING PIN
116	11320-0350008-1	CYLINDER	220	11315-0250002-1	SPRING	428	2040400-05100-0	SPRING PIN
118	11322-0370001-1	CYLINDER RING	221	11376-0250001-1	SPRING	429	11363-0644701-1	PUSHER
119	11321-0350002-1	CYLINDER SPACER	222	11319-0250002-2	SPRING	430	2040500-01010-0	LOCK NUT
120	2041101-09020-0	O - RING	223	2040401-03080-0	SPIRAL PINS	431	1132F-0354701-1	LATCH SPRING
122	11327-0350002-1	BUMPER	301	11230-0374202-1	GUN BODY UNIT	432	11398-0350001-1	LATCH SPRING BUSHING
123	11371-0374701-2	DEFLECTOR	302	1132H-0350001-2	GASKET	433	11343-0354701-1	LATCH
124	2040103-05010-2	COUNTER SUNK SCREW	303	11346-0354303-1	END CAP	434	1133V-0354702-1	MAGAZINE SPACER
125	11380-0354701-1	GASKET	305	2040100-03030-0	BOLT ASSY	435	2040500-03020-0	LOCK NUT
126	1135J-0480001-1	PRESS RING	401	2041109-07010-0	O - RING	436	11323-0644701-1	BRACKET
127	11388-0354703-1	DRIVER GUIDE	402	11382-0644701-1	NOSE PIECE	437	2040500-04010-0	LOCK NUT
128	1135G-0374701-1	RUBBER PAD	404	2040100-05010-2	BOLT ASSY	438	2040202-03010-0	FLAT WASHER
130	2040500-05010-0	LOCK NUT	405	11338-0354702-1	SAFETY GUIDE	439	2040101-03161-0	HEX.SOC.HD.BOLT
131	1136B-0354701-1	DEFLECTOR PAD	406	11337-0644701-2	SAFETY SPRING	441	2040101-03030-0	HEX.SOC.HD.BOLT
132	1136C-0354701-1	POSITIONING AXIT	407	11331-0644701-1	SAFETY A	442	11339-0640001-1	PROTECTIVE CASING
133	1131L-0350001-1	POSITIONING SPRING	408	2040101-02030-0	HEX.SOC.HD.BOLT	443	1131G-0644701-1	FIXED RING
201	2041100-02020-0	O - RING	409	2040101-04020-0	HEX.SOC.HD.BOLT			
202	11373-0250001-1	TRIGGER VALVE HEAD	410	2040202-04010-0	FLAT WASHER			
203	2041109-02010-0	O - RING	411	1135K-0644701-1	SCREW FIXING SEAT			
204	2041100-01070-0	O - RING	412	2040500-02010-0	LOCK NUT			
206	1133S-0250001-1	VALVE PLUNGER	413	11332-0644701-1	SAFETY B			