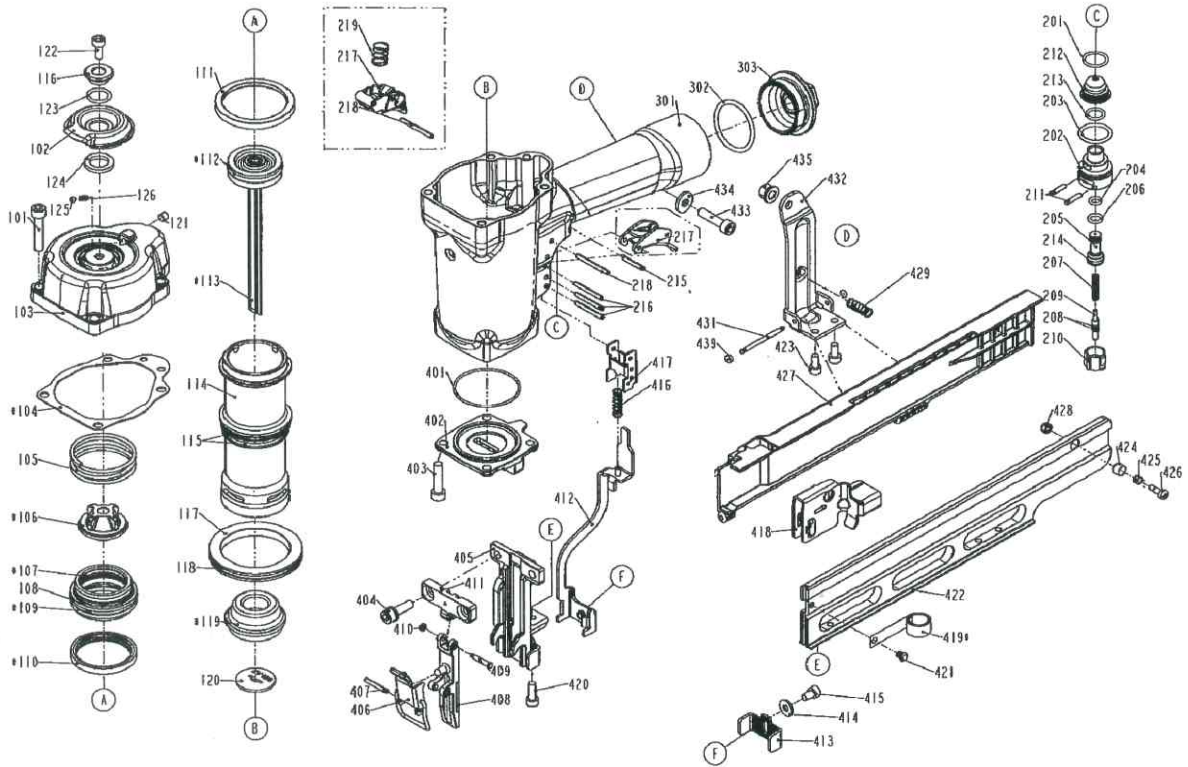


DIAGRAM OF S8/51-B1



ITEM NO.	PART NO.	DESCRIPTION	ITEM NO.	PART NO.	DESCRIPTION	ITEM NO.	PART NO.	DESCRIPTION
101	2040101-04110-0	HEX.SOC.HD.BOLT	208	2041108-01020-0	O - RING	419	11372-0460001-1	SPRING
102	11371-0084301-1	DEFLECTOR	209	11375-0860002-1	PLUNGER	420	2040100-03010-2	BOLT ASSY
103	11369-0071307-1	CAP	210	11373-0860001-1	TRIGGER VALVE HEAD	421	11324-0074702-1	FIXED PIN
104	11302-0824701-1	CYLINDER CAP SEAL	211	11329-0860001-1	PIN	422	11389-0074705-2	MAGAZINE A
105	11360-0460001-3	COMPRESSION SPRING	212	11374-0860001-1	COVER-PLUNGER	423	2040101-03040-2	HEX.SOC.HD.BOLT
106	11370-0820001-1	SEAL	213	2041104-02070-0	O - RING	424	1132N-0820001-1	DEEP IMPACT SOCKET 1
107	2041104-04070-0	O - RING	214	2041100-01030-0	O - RING	425	11311-0074701-1	LATCH SPRING
108	11368-0820001-2	HD.VALVE PISTON	215	2040401-05100-0	SPIRAL PINS	426	11310-0074703-1	DOOR LATCH
109	2041109-05030-0	O - RING	216	2040401-05150-0	SPIRAL PINS	427	11348-0070001-4	MOUNTING BRACKET
110	11399-0460002-1	COLLAR, VALVE	217	11224-1111101-2	TRIGGER UNIT	428	2040500-02020-0	LOCK NUT
111	1135J-0070001-1	PRESS RING	218	2040401-05160-0	SPIRAL PINS	429	11337-0074701-1	SAFETY SPRING
112	2041100-04051-0	O - RING	219	11376-0370001-1	SPRING	431	1135N-0074701-1	HINGE POINT
113	11204-0070021-2	DRIVER UNIT ONE PCS	301	11230-0076608-2	GUN BODY UNIT	432	11323-0074707-2	POSITIONING SHEET
114	11320-0070005-1	CYLINDER	302	2041101-04020-0	O - RING	433	2040101-04090-0	HEX.SOC.HD.BOLT
115	2041104-05030-0	O - RING	303	11346-0951301-1	END CAP	434	2040202-04010-0	FLAT WASHER
116	11381-0464701-1	WASHER	401	2041109-05160-0	O - RING	435	2040501-04010-0	BOLT CAP
117	11321-0820001-1	CYLINDER SPACER	402	11326-0824701-2	BASE	439	1135H-1314701-1	PU RETAINER
118	2041104-07020-0	O - RING	403	2040101-04200-2	HEX.SOC.HD.BOLT			
119	11327-0824701-1	BUMPER	404	2040100-04010-2	BOLT ASSY			
120	11388-0074703-1	DRIVER GUIDE	405	11303-0074705-3	DRIVER GUIDE			
121	2040104-03010-0	HEX.SOC.HD.SCREW	406	11244-0074702-1	LOCK HANDLE UNIT			
122	2040101-03050-2	HEX.SOC.HD.BOLT	407	2040402-05110-0	SPIRAL PINS			
123	2041105-02010-0	O - RING	408	11352-0074706-1	DRIVER GUIDE COVER A			
124	1135G-0460001-1	RUBBER PAD	409	11324-0074701-1	FIXED PIN			
125	2040800-02010-0	BALL	410	1131D-0460001-1	URETHANE RETAINER			
126	1131L-0464701-1	POSITIONING SPRING	411	11353-0074703-2	DRIVER GUIDE COVER B			
201	2041104-02060-0	O - RING	412	11256-0074702-1	SAFETY B UNIT			
202	11374-0860001-1	PLUNGER CAP	413	11331-0074707-1	SAFETY A			
203	2041100-02050-0	O - RING	414	2040202-03010-0	FLAT WASHER			
204	2041100-01070-0	O - RING	415	2040101-03030-1	HEX.SOC.HD.BOLT			
205	1133S-0860001-1	VALVE PLUNGER	416	11337-0084701-1	WORK CONTACT ELEMENT PRING			
206	2041100-01050-0	O - RING	417	11338-0074702-1	SAFETY GUIDE			
207	11376-0860001-1	SPRING	418	11363-0074702-1	PUSHER			