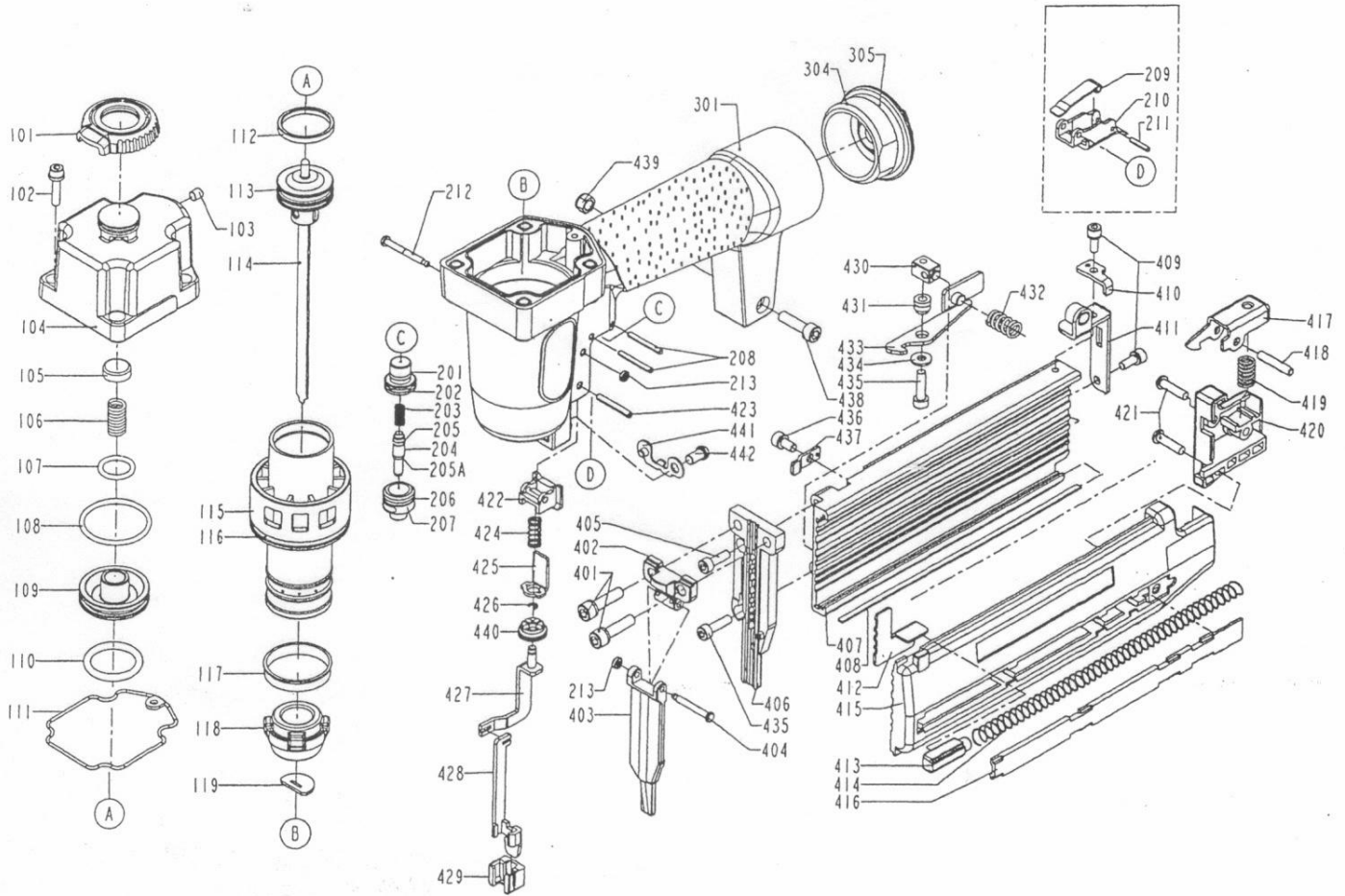


DIAGRAM OF B18/50P-A3



ITEM NO.	PART NO.	DESCRIPTION	ITEM NO.	PART NO.	DESCRIPTION	ITEM NO.	PART NO.	DESCRIPTION
101	11371-0394701-3	DEFLECTOR	301	11230-0152436-2	GUN BODY UNIT	431	1133V-0264701-1	MAGAZINE SPACER
102	2040100-02010-0	BOLT W/FLAT WASHER	304	11346-0151302-1	END CAP	432	11313-0394701-1	LOCK SPRING
103	2040104-03010-0	HEX.SOC.HD.SCREW	305	2041109-04060-0	O - RING	433	1135Y-0394701-1	LATCH
104	11201-0394701-1	CAP UNIT	401	2040100-03020-0	BOLT ASSY	434	2040202-02020-0	FLAT WASHER
105	11370-0010003-1	SEAL	402	11353-0394704-1	DRIVER GUIDE COVER B	435	2040101-02080-0	HEX.SOC.HD.BOLT
106	11360-0010001-3	COMPRESSION SPRING	403	11352-0394705-3	DRIVER GUIDE COVER A	436	2040101-02020-0	HEX.SOC.HD.BOLT
107	2041100-02020-0	O - RING	404	11324-0264701-1	FIXED PIN	437	11305-0264702-1	STOPPER A
108	2041108-04010-0	O - RING	405	2040101-02060-0	HEX.SOC.HD.BOLT	438	2040101-03080-0	HEX.SOC.HD.BOLT
109	11368-0150001-1	HD.VALVE PISTON	406	11303-0394720-1	DRIVER GUIDE	439	2040500-03020-0	LOCK NUT
110	2041108-03120-0	O - RING	407	11389-0394713-1	MAGAZINE A	440	1137H-0264701-1	ADJUST AXIE
111	1132M-0154701-1	PACKING	408	11377-0394701-1	FLAT BAR	441	11305-0264701-1	STOPPER
112	11350-0010002-1	PISTON RING	409	2040100-02050-0	BOLT ASSY	442	2040102-03070-0	HALF ROUND HD.HEX.BOLT
113	2041105-03020-0	O - RING	410	11341-0154702-1	STOPPER			
114	11204-0390014-1	DRIVER UNIT	411	11323-0394705-1	BRACKET			
115	11320-0390007-1	CYLINDER	412	11363-0394702-1	PUSHER			
116	2041109-05090-0	O - RING	413	11378-0151101-1	SHAFT			
117	11322-0010001-1	CYLINDER RING	414	11367-0394701-1	PUSHER SPRING			
118	11327-0800001-1	BUMPER	415	11391-0394704-2	MAGAZINE B			
119	11388-0394701-1	DRIVER GUIDE	416	1134R-0150001-1	SPRING COVER			
201	2041102-01020-0	O - RING	417	11343-0394701-1	LATCH			
202	11373-0150001-2	TRIGGER VALVE HEAD	418	11344-0394702-1	LATCH PIN			
203	1133U-0014701-1	SPRING	419	11313-0084701-1	LOCK SPRING			
204	11375-0154701-1	PLUNGER	420	11390-0394702-1	PROTECTING HOOD COVER			
205	2041102-01030-0	O - RING	421	2040107-02040-0	TAP BOLT			
205A	2041102-01031-0	O - RING	422	11338-0264701-1	SAFETY GUIDE			
206	2041109-02030-0	O - RING	423	2040400-05110-0	SPRING PIN			
207	11374-0154701-1	PLUNGER CAP	424	11337-0264702-1	SAFETY SPRING			
208	2040400-04110-0	SPRING PIN	425	11330-0264701-1	SAFETY			
209	11317-0154701-1	SECONDARY TRIGGER	426	1131C-0664701-1	RING			
210	11316-0154701-1	TRIGGER	427	11332-0394704-1	SAFETY B			
211	2040400-04070-0	SPRING PIN	428	11331-0394701-1	SAFETY A			
212	11318-0154701-1	TRIGGER PIVOT PIN	429	11339-0264701-1	PROTECTIVE CASING			
213	1131D-0460001-1	URETHANE RETAINER	430	1131F-0264701-1	ANCHOR BLOCK			